

WATERVIEW

IN BICENTENNIAL PARK



Be inspired at Waterview. Overlooking vast parklands, ponds and lakes Waterview is the ideal location to host your business event. Motivate your delegates with this serene setting located within Bicentennial Park. Offering remarkable function spaces ideal for conferences, conventions, exhibitions, product launches, gala dinners, cocktail celebrations and corporate events. Waterview boasts an inspiring abundance of natural light streaming in through floor to ceiling windows as well as tranquil views and unsurpassed service. Let Waterview's experienced and dedicated team tailor a package perfectly suited to achieve your successful business event.

WATERVIEW

IN BICENTENNIAL PARK



Be inspired at Waterview. Overlooking vast parklands, ponds and lakes Waterview is the ideal location to host your business event. Motivate your delegates with this serene setting located within Bicentennial Park. Offering remarkable function spaces ideal for conferences, conventions, exhibitions, product launches, gala dinners, cocktail celebrations and corporate events. Waterview boasts an inspiring abundance of natural light streaming in through floor to ceiling windows as well as tranquil views and unsurpassed service. Let Waterview's experienced and dedicated team tailor a package perfectly suited to achieve your successful business event.

WATERVIEW

IN BICENTENNIAL PARK



Be inspired at Waterview. Overlooking vast parklands, ponds and lakes Waterview is the ideal location to host your business event. Motivate your delegates with this serene setting located within Bicentennial Park. Offering remarkable function spaces ideal for conferences, conventions, exhibitions, product launches, gala dinners, cocktail celebrations and corporate events. Waterview boasts an inspiring abundance of natural light streaming in through floor to ceiling windows as well as tranquil views and unsurpassed service. Let Waterview's experienced and dedicated team tailor a package perfectly suited to achieve your successful business event.

WATERVIEW

IN BICENTENNIAL PARK



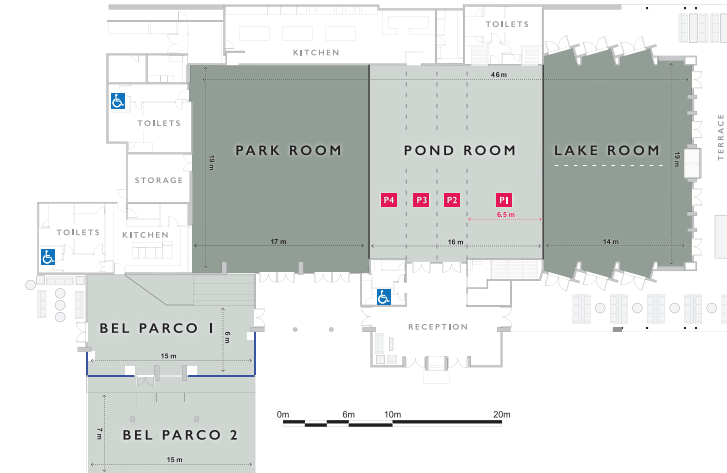
Be inspired at Waterview. Overlooking vast parklands, ponds and lakes Waterview is the ideal location to host your business event. Motivate your delegates with this serene setting located within Bicentennial Park. Offering remarkable function spaces ideal for conferences, conventions, exhibitions, product launches, gala dinners, cocktail celebrations and corporate events. Waterview boasts an inspiring abundance of natural light streaming in through floor to ceiling windows as well as tranquil views and unsurpassed service. Let Waterview's experienced and dedicated team tailor a package perfectly suited to achieve your successful business event.

WATERVIEW

IN BICENTENNIAL PARK

VENUE CAPACITIES						
ROOM	CEILING HEIGHT (M)	COCKTAIL	BANQUET (12 PER TABLE)	BANQUET W/ DANCE FLOOR	THEATRE	CABARET
Entire Venue	4.6 - 6.6	1500	912	816	1000	520
Lake + Pond Room	4.6 - 6.6	700	504	408	605	320
Park Room	6.6	540	276	228	350	200
Bel Parco	2.5 - 3.25	250	144	108	120	100

Capacities may vary depending on audio visual, production, entertainment and catering requirements.
Our Sales and Event Management Team will assist you with a floor plan tailored to your event specifications.



SERVICES & FACILITIES

- Natural light streaming in from floor to ceiling windows
- Outdoor undercover terrace for pre-function area or catering breakout area
- Floor to ceiling glass doors opening out to covered terrace
- Inspiring views overlooking vast parklands, ponds and lakes
- Rooms offer both natural light and automated black out facilities
- Ideal venue for mid to large banqueting and cocktail events
- Purpose-built, highly versatile, multi-function space
- Onsite parking
- On site commercial kitchen facilities
- On site Executive Chef, Kitchen and Venue Operations Team
- Extensive range of restaurant quality menus and beverages
- Discreet and fully functional permanent bars in each venue space
- Fully air-conditioned
- Direct loading dock access on side of venue
- State of the art audio-visual equipment and service by Impact AV

LOCATION & LANDMARKS

- The venue is located in Bicentennial Park, Sydney Olympic Park
- Offering tranquil views overlooking vast parklands, ponds and lakes
- Centrally located in Sydney Metropolitan
- 15 minutes from Sydney CBD via Westconnex
- 18km from Sydney Airport
- 10-minute walk from Concord West or Olympic Park Train Stations
- Nearby accommodation such as Novotel, Ibis, Pullman and Quest Apartments all located in Sydney Olympic Park.
- Limousines, taxi and coach drop off points outside Waterview Cafe

AUDIO VISUAL FACILITIES

Screens and Vision

- 4 x 12ft 16:10 ratio motorised roof-mounted screens (Lake Room and Park Room)
- 1 x 10ft 16:10 ratio motorised roof-mounted screen (Pond Room)
- 5 x NEC 7.5k full HD projectors (widescreen)
- Patching and data distribution done via Black Box full HD Matrix Unit running HDMI in and out

Audio

- 15 x JBL-SRX roof-mounted speakers running on Crown IT 4000 power amplifiers

Lighting

- 24 x roof wash cyclo lights
- 15 x 230w moving head beam lights
- 20 x LED moving head wash lights

Charges are applicable for all AV equipment and services.
Please contact Impact AV on 1300 633 328 or visit impactav.com.au for a quotation.